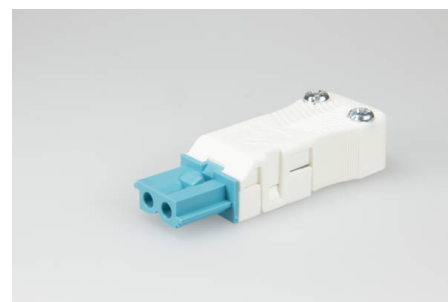




Connectors System AC 164 Plug and Socket Connectors Flat Version

AC 164 BUF/ 2 PB ZEL WS



Order Info

reference number (ref. no.)	147412
PU	200
EAN	4028012120857

Type

Type	socket
connection type	screw
number of poles	2 pole
coding	2 (DALI)
colour	pastel blue white
protection against incorrect plugging	yes
latch	yes

Electrical Data

rated voltage	250 V
rated voltage (UL)	600 V
rated current	16 A
rated current (UL)	16 A
rated impulse voltage	4.0 kV

Connection Data

cross-section rating	2.5 mm ²
cross-section rating (UL)	16 AWG
clamping range	0.5 - 2.5 mm ²
sheathing cable diameter	5.0 - 8.8 mm
type of conductor	fine stranded, stranded, solid
stripping length	7.0 mm
dismantling length	22.0 mm
clamping units per pole	1
contact screw assembly	PZ 1 / ⌀ 0.5 Nm
strain relief assembly	PZ 1 / ⌀ 0.5 Nm

Ambient Conditions

T _{max} ambient air (at rated current)	70 °C
-------------------------------------------------	-------

IP Code acc. to EN 60529	IP20
IP Code when plugged	IP40

Materials

insulator material	PA
contact material	brass
flammability rating acc. to UL 94	V-2

Approvals

acc. to EN 61535	yes
acc. to UL	yes

Accessories

AC 164 VT 3/2 PB	23056
-------------------------	-------