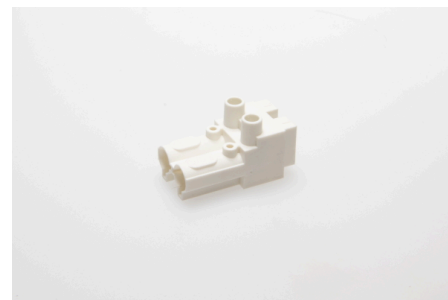




## Connectors System AC 166® Classic Plug and Socket Connectors Tall Version

### AC 166-A BU/ 2 WS



#### Order Info

reference number (ref. no.)	163352
PU	250
EAN	4028012107063

#### Type

Type	socket
connection type	screw
number of poles	2 pole
coding	1 (mains)
colour	white
protection against incorrect plugging	yes

#### Electrical Data

rated voltage	250 V
rated current	16 A
rated impulse voltage	2.5 kV

#### Connection Data

cross-section rating	2.5 mm <sup>2</sup>
cross-section rating (UL)	14 AWG
clamping range	0.5 - 4.0 mm <sup>2</sup>
type of conductor	fine stranded, stranded, solid
stripping length	7.0 mm
fixing	Screw
clamping units per pole	1
mounting hole diameter	3.5 mm

#### Ambient Conditions

T <sub>max</sub> ambient air (at rated current)	70 °C
T <sub>max</sub> component (operation)	110 °C
T <sub>min</sub> component (operation)	-20 °C
IP Code acc. to EN 60529	IP20
IP Code when plugged	IP40

## Materials

<b>insulator material</b>	PA
<b>contact material</b>	brass
<b>flammability rating acc. to UL 94</b>	V-2

## Approvals

<b>acc. to EN 61984</b>	yes
<b>acc. to UL</b>	yes
<b>acc. to CSA</b>	yes

## Accessories

<b>AC 166-A ZEL/ 2 WS</b>	166652
<b>AC 166-A ZEL/ 2 O WS</b>	17613