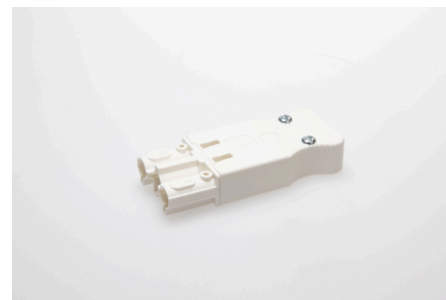




## Connectors System AC 166® Classic Plug and Socket Connectors Flat Version

### AC 166 BUF/325 WS



#### Order Info

reference number (ref. no.)	164253
PU	200
EAN	4028012143535

#### Type

Type	socket
connection type	screw
number of poles	3 pole
coding	1 (mains)
colour	white
protection against incorrect plugging	yes
PE-function	yes
strain relief	yes

#### Electrical Data

rated voltage	250 V
rated current	16 A
rated impulse voltage	2.5 kV

#### Connection Data

cross-section rating	2.5 mm <sup>2</sup>
cross-section rating (UL)	14 AWG
clamping range	0.5 - 4.0 mm <sup>2</sup>
sheathing cable diameter	9.5 - 10.5 mm
type of conductor	fine stranded, stranded, solid
stripping length	7.0 mm
dismantling length	32.0 mm
dismantling length PE	39.0 mm
clamping units per pole	1

#### Ambient Conditions

T <sub>max</sub> ambient air (at rated current)	70 °C
T <sub>max</sub> component (operation)	110 °C
T <sub>min</sub> component (operation)	-20 °C

<b>IP Code acc. to EN 60529</b>	IP20
<b>IP Code when plugged</b>	IP40

## Materials

<b>insulator material</b>	PA
<b>contact material</b>	brass
<b>flammability rating acc. to UL 94</b>	V-2

## Approvals

<b>acc. to EN 61984</b>	yes
<b>acc. to UL</b>	yes
<b>acc. to CSA</b>	yes

## Accessories

<b>AC 166 VSF WS</b>	169553
----------------------	--------