



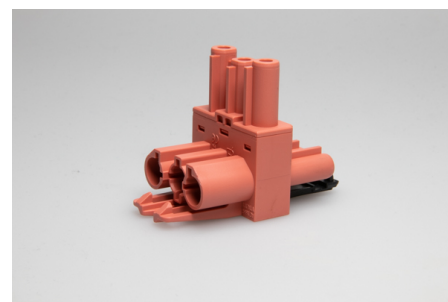
## Building Installation Connector System AC 166®

G  
Distributors

### AC 166 GVTA 3/3 HR

#### Order Info

reference number (ref. no.)	167273
PU	100
EAN	4028012173341



#### Type

Type	T-shaped 1 input / 2 outputs, stackable
number of poles	3 pole
coding	3 (mains)
colour	light red
protection against incorrect plugging	yes
PE-function	yes
latch	yes

#### Electrical Data

rated voltage	250 V
rated current	20 A
rated impulse voltage	4.0 kV

#### Connection Data

pole marking	L ⊕ N
--------------	-------

#### Ambient Conditions

T <sub>max</sub> ambient air (at rated current)	70 °C
T <sub>max</sub> component (operation)	110 °C
T <sub>min</sub> component (operation)	-20 °C
IP Code acc. to EN 60529	IP20
IP Code when plugged	IP40

#### Materials

insulator material	PA
contact material	brass
flammability rating acc. to UL 94	V-2

## Approvals

<b>acc. to EN 61535</b>	yes
<b>acc. to UL</b>	yes

## Accessories

<b>AC 166 BC/ 3 SW</b>	169783
<b>AC 166 BC/ 3 WS</b>	169773