

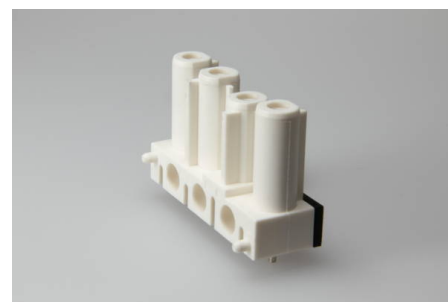


## Building Installation Connector System AC 166®

G

Terminal Blocks with Solder Tags

### AC 166 GBULV/ 4 WS



#### Order Info

reference number (ref. no.)	169354
PU	150
EAN	4028012107612

#### Type

Type	socket vertical
connection type	solder
number of poles	4 pole
coding	1 (mains)
colour	white
protection against incorrect plugging	yes
PE-function	yes

#### Electrical Data

rated voltage	400 V
rated current	20 A
rated impulse voltage	4.0 kV

#### Connection Data

mounting hole diameter	1.4 mm
solder pin length	3.3 mm

#### Ambient Conditions

T <sub>max</sub> ambient air (at rated current)	70 °C
T <sub>max</sub> component (operation)	110 °C
T <sub>min</sub> component (operation)	-20 °C
IP Code acc. to EN 60529	IP20
IP Code when plugged	IP40

#### Materials

insulator material	PA
contact material	brass
flammability rating acc. to UL 94	V-2

## Approvals

<b>acc. to EN 61535</b>	yes
<b>acc. to UL</b>	yes

## Accessories

<b>AC 166 VSL SW</b>	169564
<b>AC 166 VSL WS</b>	169554