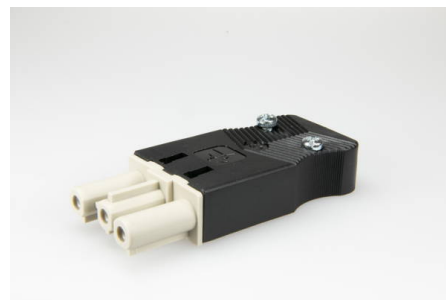




Building Installation Connector System AC 166®
G
Plug and Socket Connectors Flat Version
AC 166 GBUF/310 KG ZEL SW



Order Info

reference number (ref. no.)	17687
PU	200
EAN	4028012135462

Type

Type	socket
connection type	screw
number of poles	3 pole
coding	2 (mains)
colour	pebble grey
protection against incorrect plugging	yes
PE-function	yes
strain relief	yes

Electrical Data

rated voltage	250 V
rated current	20 A
rated impulse voltage	4.0 kV

Connection Data

cross-section rating	2.5 mm ²
cross-section rating (UL)	14 AWG
clamping range	0.5 - 4.0 mm ²
sheathing cable diameter	4.5 - 5.5 mm
type of conductor	fine stranded, stranded, solid
stripping length	7.0 mm
dismantling length	32.0 mm
dismantling length PE	39.0 mm
clamping units per pole	1
contact screw assembly	0.5 x 3.0 / ⌀ 0.3 Nm
strain relief assembly	PZ 1 / ⌀ 0.5 Nm

Ambient Conditions

T_{max} ambient air (at rated current)	70 °C
T_{max} component (operation)	110 °C
T_{min} component (operation)	-20 °C
IP Code acc. to EN 60529	IP20
IP Code when plugged	IP40

Materials

insulator material	PA
contact material	brass
flammability rating acc. to UL 94	V-2

Approvals

acc. to UL	yes
acc. to CSA	yes

Accessories

AC 166 VSF SW	169563
AC 166 VSF WS	169553