

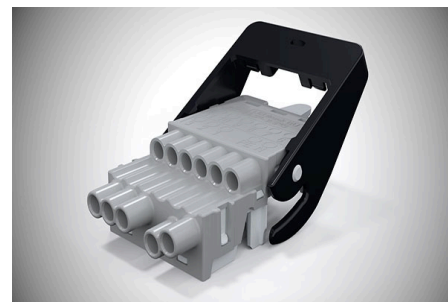


## LEDtrack Row Lighting System LEDtrack Components

### LEDtrack BU/11-5 GEN2

#### Order Info

reference number (ref. no.)	26900
PU	400
EAN	4028012179626



#### Type

Type	socket
connection type	push-in
number of poles	5 pole
colour	natural grey
PE-function	yes
latch	yes

#### Electrical Data

rated voltage	400 V
rated current	16 A
rated impulse voltage	6.0 kV

#### Connection Data

cross-section rating	2.5 mm <sup>2</sup>
clamping range	1.5 - 2.5 mm <sup>2</sup>
type of conductor	solid
stripping length	15.0 mm
clamping units per pole	1

#### Ambient Conditions

T <sub>max</sub> component (operation)	105 °C
T <sub>min</sub> component (operation)	-25 °C
IP Code when plugged	IP20

#### Materials

insulator material	PA
contact material	copper
flammability rating acc. to UL 94	V-2

## Approvals

---

**acc. to EN 61984**

yes

---

## Accessories

---

**LEDtrack ABK**

159901

---